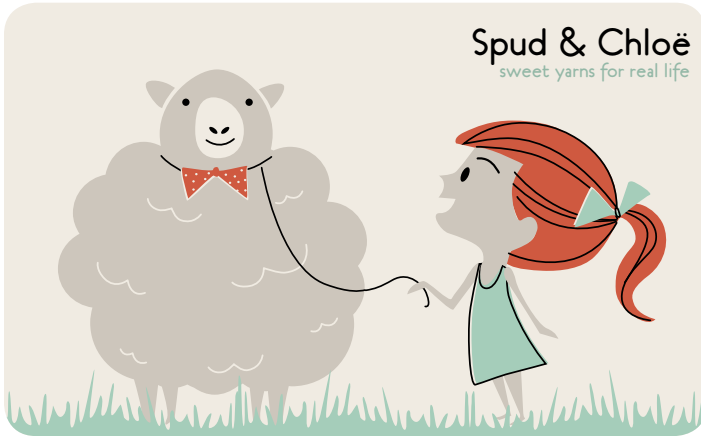


# Watermelon Hat by Susan B. Anderson



spudandchloe.com  
spudandchloe.com/blog

## Copyright 2009:

Pattern designed and written by Susan B. Anderson for Spud & Chloë. This pattern is owned and copyrighted by Spud & Chloë. This pattern is for personal use only and may not be sold, photocopied or copied electronically or distributed in any way without permission from Spud & Chloë. This pattern may not be sold in knitted form without permission from Spud & Chloë. Selling the knitted item for charity or fundraising purposes, with 100% of proceeds going to the charity, is always welcome.

## Watermelon Hat

Original pattern by Susan B. Anderson for Spud & Chloë

**Sizes:** newborn (0-6 months, 6-12 months, 1-2 years, small child)

**Yarn:** Spud & Chloë Sweater (55% superwash wool, 45% organic cotton; 160 yards), 1 skein each in Watermelon #7512, Ice Cream #7500 and Grass #7502 and a small amount of Rootbeer #7503 for the seeds (optional)

**Tools:** US size 7 sixteen-inch circular needles for sizes 0-6 months through small child; newborn size will need a 12-inch circular or can be completed on double-pointed needles only. Use needle size to achieve correct gauge.

US size 7 set of 4 double-pointed needles or size to obtain gauge

Ruler or tape measure

Yarn needle

Scissors

Stitch marker

**Gauge:** 5 stitches per inch in stockinette stitch



**Abbreviations:**

Rnd(s) round(s)

k: knit

p: purl

k2tog: knit two stitches together

**Hat:**

With Grass and circular needles cast on 56 (64, 72, 80, 88) stitches. Join to work in the round being careful not to twist the stitches. Place a stitch marker on the first stitch.

Rnds 1-3: (k1, p1) repeat to the end of the round.

Rnds 4 & 5: knit

Rnds 6 & 7: switch to Ice Cream and knit.

Switch to Watermelon and knit every round until the hat measures 4 (4.5, 5, 5.5, 6) inches from the cast on edge.

**Decrease rounds:**

Rnd 1: (k6, k2tog) repeat to the end of the round

Rnd 2: (k5, k2tog) repeat to the end of the round

Rnds 3 & 4: knit

At this point, switch to double-pointed needles and continue.

Rnd 5: (k4, k2tog) repeat to the end of the round

Rnd 6: knit

Rnd 7: (k3, k2tog) repeat to the end of the round

Rnd 8: (k2, k2tog) repeat to the end of the round

Rnd 9: knit

Rnd 10: (k1, k2tog) repeat to the end of the round

Rnds 11-13: knit

Rnd 14: k2tog to the end of the round

Rnds 15-17: knit

Rnd 18: k2tog to the end of the round, knit any remaining stitches.



Place all stitches on 1 double-pointed needle. Work in I-cord on 2 doublepointed needles. For some sizes on the first row of the I-cord you will need to knit k2tog until you have 3 stitches remaining. Work on 3 stitches and in I-cord until the cord measures 2-inches. Bind off.

Cut the yarn and pull the end through the remaining stitch. Tie a knot in the cord. Place the end on a yarn needle and pull through the inside of the hat. Weave in the end and trim. Weave all ends from the color changes to the wrong side of the hat and trim.

**Seeds: (optional)**

Cut a length of Rootbeer and place the end on a yarn needle. Take 3 straight stitches to form a triangle and one more straight stitch to fill in the center of the seed. Weave all ends to the inside of the hat and trim. Use the photograph as a guide for the seeds.